

Lola Rist

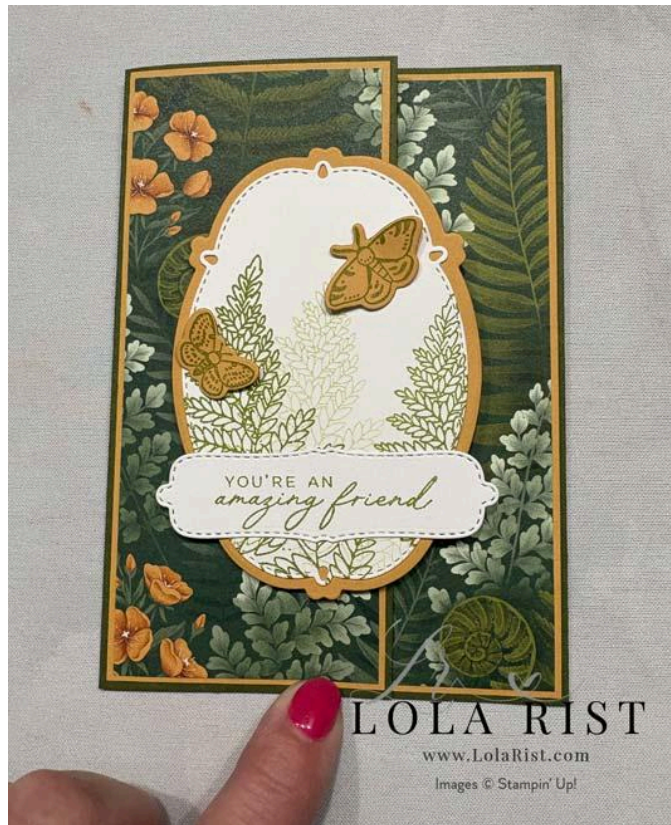
LOLA RIST

LOLA RIST, STAMPIN' UP! DEMONSTRATOR

www.LolaRist.com

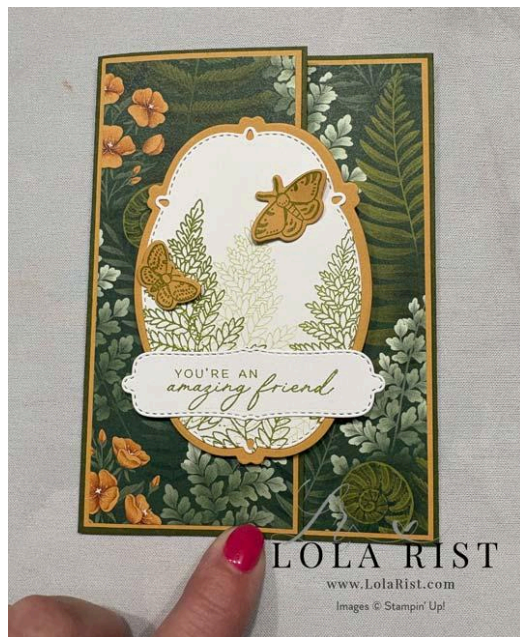
Inside Slider Card

May, 2026



DSP
Card Stock
Dies
Stamp Set
Ink

Moonlit Flora
Mossy Meadow, Golden Glow, White
Sweet Words and Labels, Fern and Flora
Fern and Flora
Old Olive



Mossy Meadow card base:
8.5 by 5.5 inches, score at 2 and 6 inches

Mats:

Golden Glow **2 $\frac{3}{8}$ by 5 $\frac{3}{8}$ in.**
 1 $\frac{7}{8}$ by 5 $\frac{3}{8}$ in.

DSP **2 $\frac{1}{4}$ by 5 $\frac{1}{4}$ in.**
 1 $\frac{3}{4}$ by 5 $\frac{1}{4}$ in.

White **3 $\frac{3}{4}$ by 4 $\frac{1}{2}$ in.**
On the short side, score at $\frac{1}{2}$ inch.

Fold the card base on the score lines. The LARGEST of the outside panels is on the LEFT.

Adhere the two DSP mats to the two Golden Glow mats. Adhere both of these to the corresponding panels on the card base.

Using Old Olive (Mossy Meadow is fine as well) stamp your image and greetings on the labels for the front of the card.

Adhere the labels together with adhesive. Set these aside until the final step of the card.

Stamp the white inside mat with the verse. SCORE LINE SHOULD BE ON THE LEFT SIDE OF THE WHITE MAT. Do NOT center the verse - stamp close to the score line!

To assemble the card, open the card base, being sure THE LARGEST OUTSIDE PANEL IS ON THE FAR LEFT.

ONLY place adhesive on the ½ scored strip of the white mat. Do not fold. Lay the white mat next to the left score line of the card base, centering between the top and bottom edges of the card base. Carefully close the front left panel of the card.



The white mat is now attached to the card base. Fold the white mat on the score line so the verse is now visible.

To finish the card, add a small amount of glue at the top and bottom edges of the far right panel.

Carefully fold the panel down so that the white mat is under the panel.

Hold in place for a view seconds while the glue dries.



Here is the top view of the card, with the white mat adhered to the far left front panel, and the right side of the white mat tucked behind the far right panel. With only the adhesive holding the white mat in place it will slide freely back and forth as the card is open and closed.

Using dimensionals only on the left side of the the stamped labels, adhere to the front of the card base on the left panel.

Embellish with gems, or in my case, the small moths from the Fern and Flora stamp set.